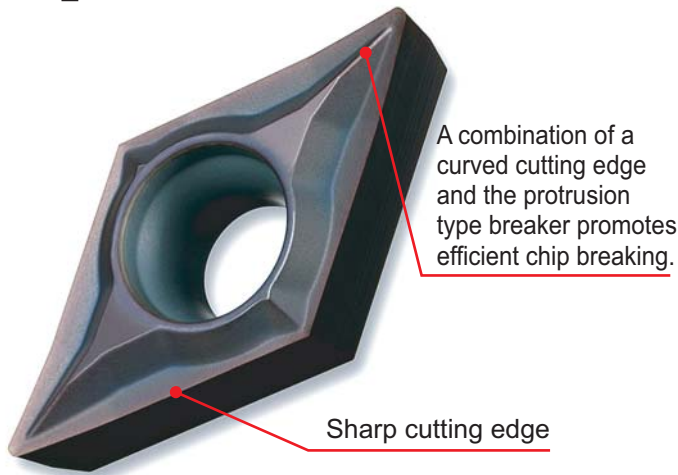
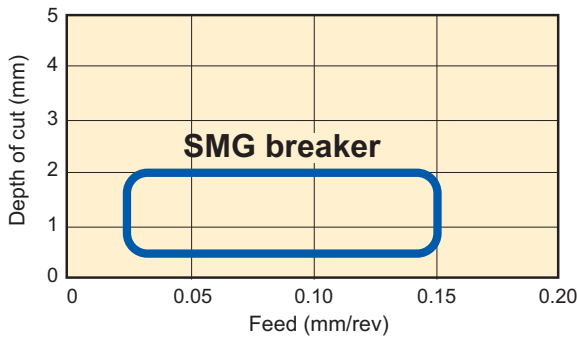


Excellent chip breaking. Ideal for continuous un-manned operations on automatic lathes.

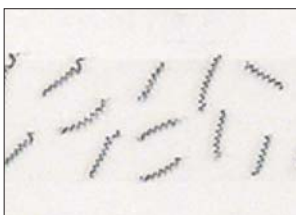


Effective chip disposal range



Good chip breaking with small depths of cut and low feeds

- The breaker design is optimized to suit to the cutting conditions for small tools.
- SMG type breaks chips into fine pieces and reduces tangling.



SMG breaker



Competitor's ground type breaker

<Cutting conditions>

Workpiece : Carbon steel (Turning)
Cutting speed: 80m/min
Depth of cut : 0.5mm

Feed : 0.03mm/rev
Non-water soluble coolant

G class inserts

- Peripheral ground (G class) inserts enable accurate cutting edge positioning, making it ideal for high precision machining.

Nose radii designed with minus tolerance

- Suitable for small parts applications that often require minus tolerance dimensions.
- The order number is shown with the letter "M" that indicates minus tolerance.

Order number) DCGT11T302 **M** -SMG

- 02M \ominus R0.18mm (R0.15 – R0.20mm)
- 04M \ominus R0.38mm (R0.35 – R0.40mm)

- The radius value is printed on the side of the insert label for easy recognition.

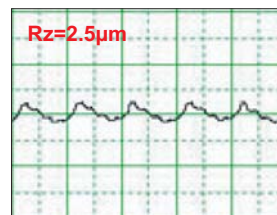
Printing example



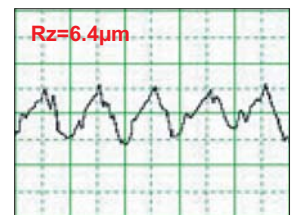
Nose Radius

High quality surface finishes

- Unique curved cutting edges offer sharp cutting action.
- The entire periphery of the inserts are finish ground (G class accuracy) to produce sharp cutting edges.



SMG breaker



Competitor's ground type breaker


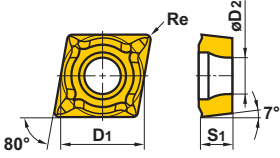

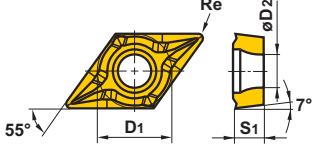
<Cutting conditions>

Workpiece : Alloy steel (Turning)
Cutting speed: 80m/min
Depth of cut : 0.1mm

Feed : 0.1mm/rev
Non-water soluble coolant

Moulded Breaker for Small Tools

Inserts

Shape	Order Number	Stock	Dimensions (mm)				Geometry
		<i>VP15TF</i>	D1	S1	Re	D2	
	CCGT060202M-SMG	●	6.35	2.38	0.18	2.8	
	060204M-SMG	●	6.35	2.38	0.38	2.8	
	DCGT070202M-SMG	●	6.35	2.38	0.18	2.8	
	070204M-SMG	●	6.35	2.38	0.38	2.8	
	11T302M-SMG	●	9.525	3.97	0.18	4.4	
	11T304M-SMG	●	9.525	3.97	0.38	4.4	

● : Inventory maintained.



www.mitsubishicarbide.com

MMC HARTMETALL GmbH

Comeniusstr. 2, 40670 Meerbusch Germany
Tel. +49-2159-9189-0 Fax +49-2159-918966
e-mail admin@mmchg.de

MMC HARDMETAL U.K. LTD.

Mitsubishi House, Galena Close, Tamworth, Staffs. B77 4AS, U.K.
Tel. +44-1827-312312 Fax +44-1827-312314
e-mail sales@mitsubishicarbide.co.uk

MMC METAL FRANCE s.a.r.l.

6, Rue Jacques Monod, 91400 Orsay, France
Tel. +33-1-69 35 53 53 Fax +33-1-69 35 53 50
e-mail mmf-sales@mmc-metal-france.fr

MITSUBISHI MATERIALS ESPAÑA, S.A.

Calle Emperador 2, 46136 Museros/Valencia, Spain
Tel. +34-96-144-1711 Fax +34-96-144-3786
e-mail mme@mmevalencia.com

MMC ITALIA S.r.l.

V.le Delle Industrie 20/5, 20020 Milano Italy
Tel. +39-02 93 77 03 1 Fax +39-02 93 58 90 93
e-mail info@mmc-italia.it

MMC HARDMETAL POLAND SP. z o.o.

Al. Armii Krajowej 61, 50-541 Wrocław, Poland
Tel. +48-71335-16-20 Fax +48-71335-16-21
e-mail sales@mitsubishicarbide.com.pl

MMC HARDMETAL RUSSIA OOO LTD.

UL. Bolschaja Pochtovaja, 36 Bldg.1, 105082 Moscow, Russia
Tel. +7-495-72558-85 Fax +7-495-98139-73
e-mail mmc@carbide.ru